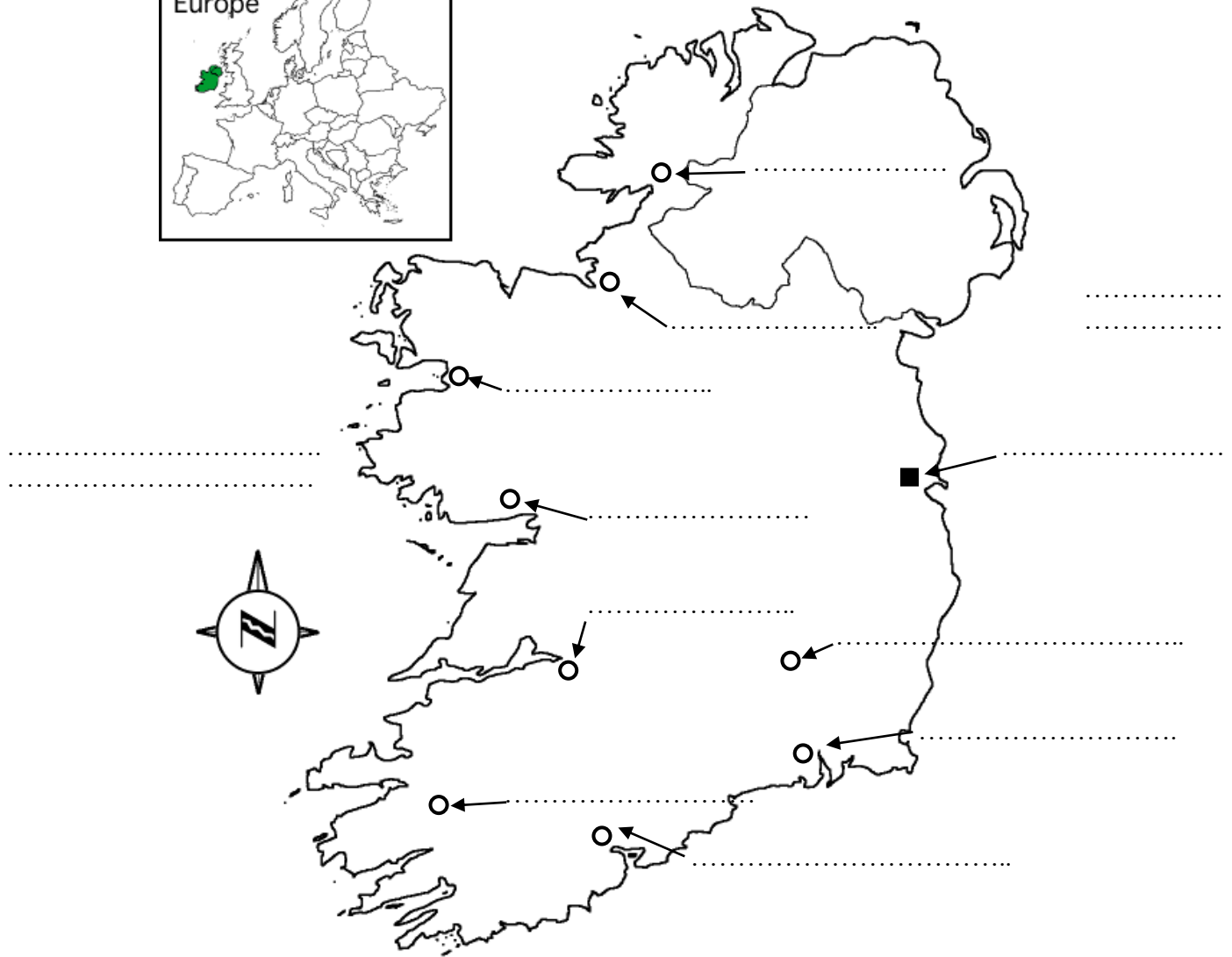


# THE REPUBLIC OF IRELAND QUIZ

The island of Ireland is divided into **two countries**:

- The ..... (Northern Ireland)
- The ..... of ..... (Eire)



© edHelper.com

a- Complete the map with the name of **the cities** O in black and **the capital** ■ of Eire in red.

Cork – Galway – Dublin – Sligo – Killarney – Waterford – Limerick – Donegal – Kilkenny - Westport

b- Write the name of **the seas/oceans** in blue.

The Atlantic Ocean – The Irish Sea

c- Tick the right answer.

• Is there **a monarch** or **a President** in the Republic of Ireland (Eire)?

- a president       a monarch

Who is it at the moment?

- Michael D. Higgins       Mary Robinson       WB Yeats

• Who is **the Prime Minister** (the Taoiseach) in Eire at the moment?

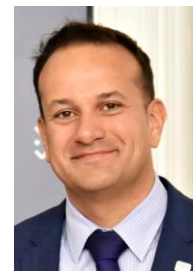
- Theresa May       Oscar Wilde       Leo Varadkar

• What is the national **currency** (money) in Eire?

- the Dollar (\$)       the Euro (€)       the Pound sterling (£)

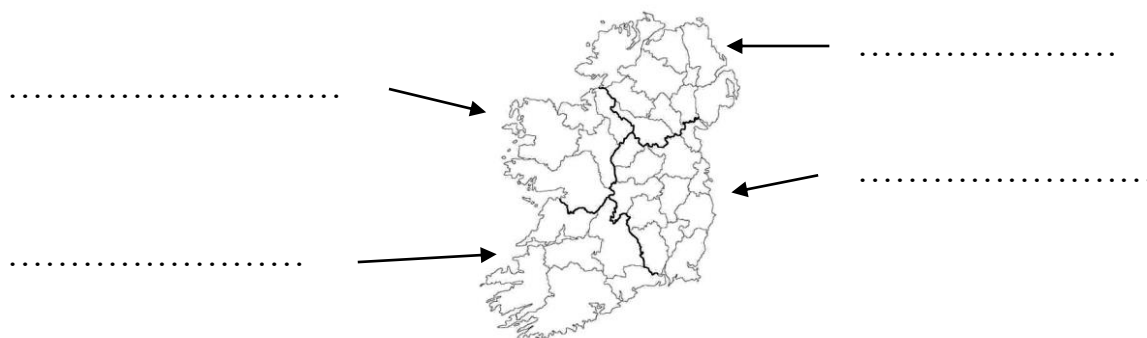
• What is the Irish national **Anthem** (song)?

- Ode to Joy       The Star Spangled Banner       Amhrán na bhFiann



d- Colour and write the names of **the four traditional provinces** of Ireland.

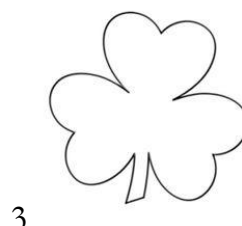
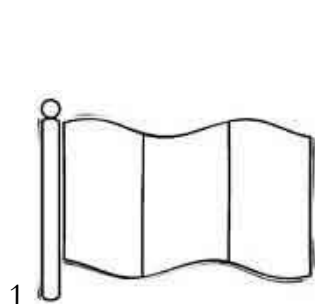
Ulster (red) – Munster (yellow) – Leinster (green) - Connacht (blue)



e- What are the names of these **symbols of Irish culture**?

Write the number of the corresponding picture. Colour the picture when it is possible.

- ... The Irish Harp – ... The Tri-colour flag - ... The Shamrock – ... the Claddagh Ring –  
 ... the Celtic Cross - ... Brigid's cross – ... Irish Dance – ... the uilleann pipe





5



6



7



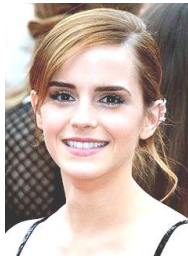
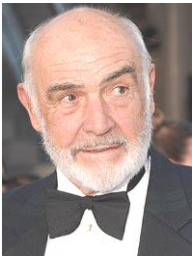
8

f- Tick if these people/characters are Irish.

- Bono (U2)
- Winston Churchill
- James Joyce
- Saoirse Ronan
- John Lennon



- Sean Connery
- Sinéad O'Connor
- Emma Watson
- Liam Neeson
- Samuel Beckett



- William Wallace
- Saint Patrick
- Mickey Mouse
- the Leprechaun
- Finn Mac Cool



g- Write the names of these Ireland's favourite sports.



F.....  
/S.....

H.....

R.....

G.....  
F.....



**h-** Complete the picture with the number of the description of these famous Irish landmarks.

<p><b>1-The Cliffs of Moher</b></p> <p>They are sea cliffs located at the southwestern edge of the Burren region in County Clare. They rise 120 metres (390 ft) above the Atlantic Ocean.</p>	<p><b>2- Dun Aonghasa</b></p> <p>It is prehistoric hill fort on the Aran Islands of County Galway. The original shape was presumably oval but parts of the cliff and fort have since collapsed into the sea.</p>	<p><b>3- Connemara</b></p> <p>It is an Irish-speaking Gaeltacht cultural region in County Galway. The landscape varies from sandy beaches to the peaks of the Twelve Bens mountain range.</p>
<p><b>4- Blarney Castle</b></p> <p>It is a medieval castle near Cork. The castle is now a partial ruin. At the top of the castle, you can see the Blarney Stone. According to legend, kissing the stone endows the kisser with the gift of great eloquence.</p>	<p><b>5- Trinity College</b></p> <p>The college was founded in 1592 by Queen Elizabeth I and is one of the oldest universities. The Library contains over 6.2 million printed volumes and significant quantities of manuscripts, including the Book of Kells.</p>	<p><b>6- Newgrange</b></p> <p>It is a prehistoric monument built in around 3200 BC. It is older than the Egyptian pyramids. It is a large circular mound with an inner stone passageway and engraved chambers.</p>
<p><b>7- Glendalough</b></p> <p>It means "Valley of two lakes" and is a glacial valley in County Wicklow. It is home to one of the most important monastic sites in Ireland.</p>	<p><b>8- The Burren</b></p> <p>It is a region dominated by glaciated karst landscape. The area is formed from a thick succession of sedimentary rocks, largely limestones.</p>	<p><b>9- Rock of Cashel</b></p> <p>It is also known as St. Patrick's Rock. It is a solitary green hill and ancient fortifications and cathedral which played an important role in Irish medieval history.</p>

